

## Module 3D drug design

### Exercise 1:

.....  
.....  
.....

### Exercise 3:

Atom types in proteins: .....

Atoms in Yasara:

Red: .....

Dark blue: .....

Green: .....

Light blue: .....

### Exercise 4:

White bonds: .....

Yellow bonds: .....

### Exercise 5:

A:

Green: .....

Blue: .....

Orange: .....

B: Indicate your answers in the figure on the next page.

### Exercise 7:

Blue: .....

Red: .....



**Exercise 8:**

- Double bonded oxygen atom
- A peptide bond
- A histidine side chain
- An alpha helix
- A disulfide bond

**Ball & Stick representation**

- .....
- .....
- .....
- .....

**Exercise 9:**

- .....
- .....
- .....

**Exercise 11:**

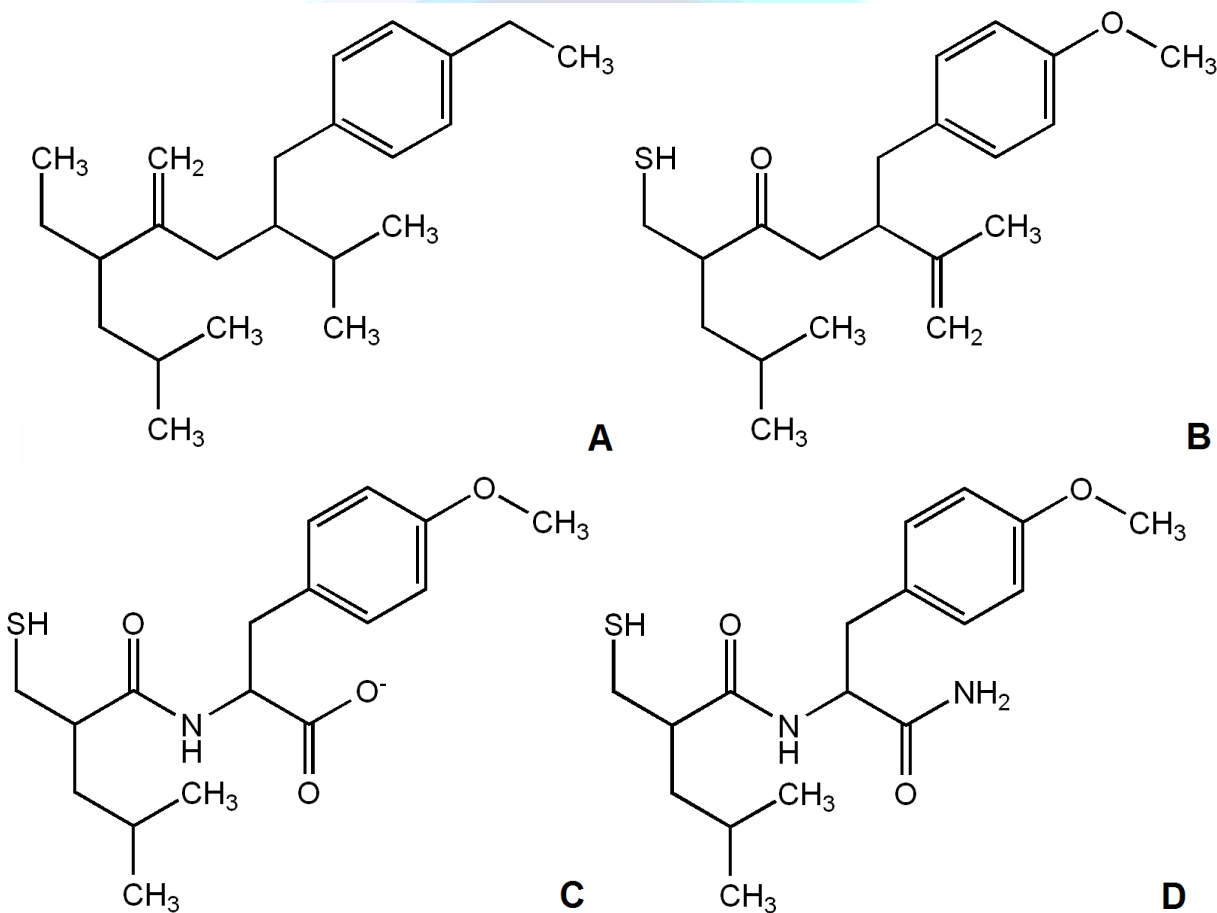
- .....
- .....

**Exercise 14:**

- .....
- .....
- .....

**Exercise 16:**

Look at the different drawings of antidotes. Mark the atoms that may be involved in interactions with the protein.



**Final question:**

.....

.....

.....

.....

.....

.....

.....